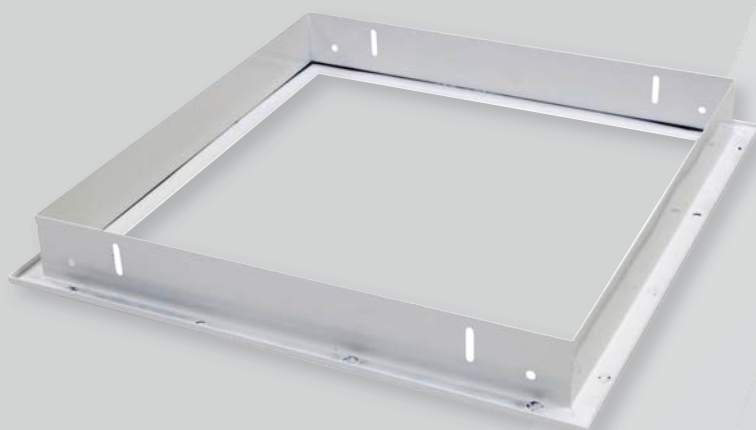
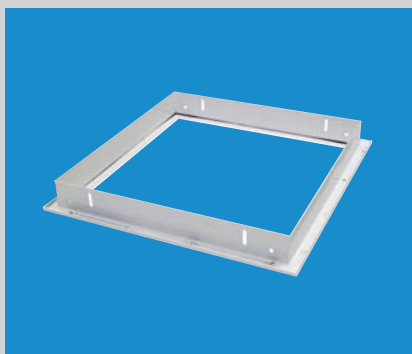


Recessed Plaster Frame

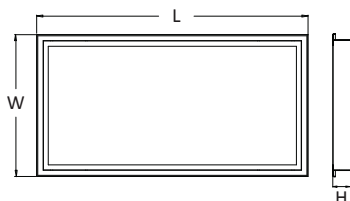
For use with
LED flat panels



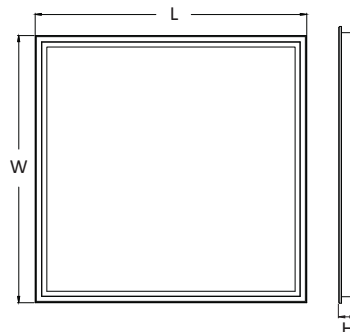
Features

- Designed for use with LED flat panels
- Frames can be installed in plaster ceilings

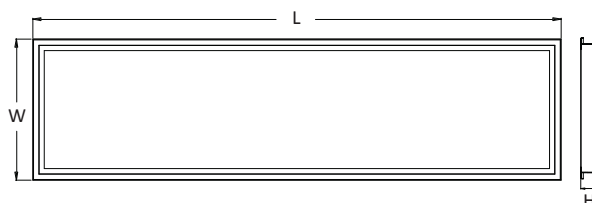
TSFP3060RPF



TSFP6060RPF



TSFP30120RPF



Part No.	Dimensions			Cut Out (L x W)mm
	Length (mm)	Width (mm)	Height (mm)	
TSFP3060RPF	630mm	330mm	41mm	610 x 310mm
TSFP6060RPF	630mm	630mm	41mm	610 x 610mm
TSFP30120RPF	1230mm	330mm	41mm	1210 x 310mm