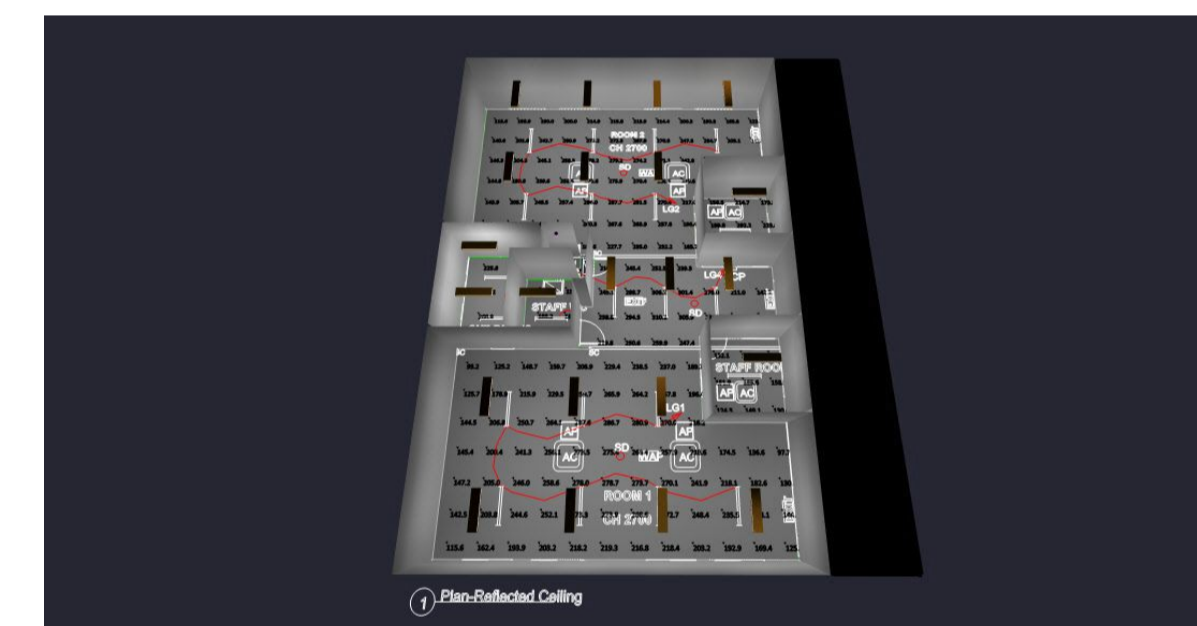
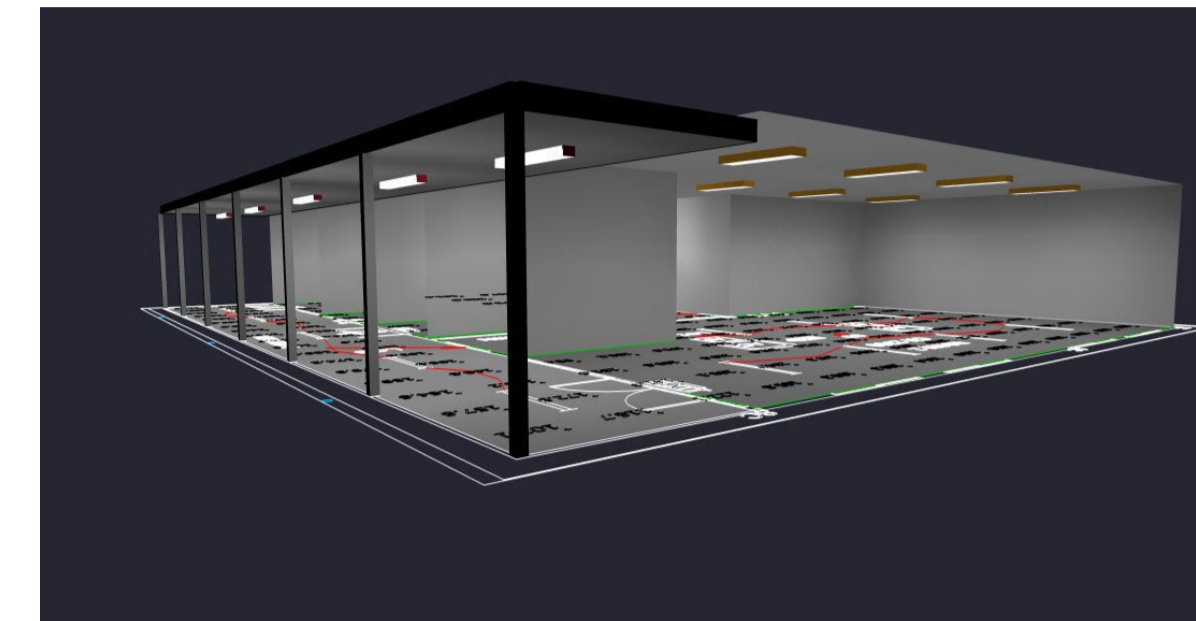


1 Plan-Reflected Ceiling



RAND Lighting Services provides this calculation "as is" without representation or warranty of any kind. The company shall be under no liability to the customer for failure to attain such figures, unless the performance of the goods is specifically guaranteed in writing and any such written guarantee shall be subject to recognised manufacturing variations and tolerances applicable to the goods.

This calculation is based upon specified parameters supplied by the client, and other design inputs assumed by us, as detailed in this document

In practice, there may be variations due to differences in as - installed luminaire positioning, room surface reflectance, supply voltage, photometric tolerances etc and normally accepted uncertainties. RAND Lighting Services reserves the right to modify the lighting scheme if relevant information subsequently becomes available.

NOTE

THIS DRAWING IS INTENDED TO CONVEY THE DESIGN CONCEPT ONLY. IT IS EXPECTED THAT THE DESIGN WILL BE FURTHER DEVELOPED.

THIS DESIGN IS BASED ON THE LIMITED INFORMATION PROVIDED AND MUST BE REVIEWED AND INTEGRATED INTO THE BUILDING DESIGN BY THE ELECTRICAL ENGINEER AND ELECTRICAL CONTRACTOR,

ILLUMINATION AND LIGHTING UNIFORMITY HAS BEEN DESIGNED TO COMPLY WITH THE RELEVANT SECTIONS OF AS1680, AS1680.2.1:2008 CIRCULATION SPACES.

THE ILLUMINATION VALUES SHOWN ARE HORIZONTAL MAINTAINED AT FLOOR LEVEL.

- THE LIGHT LOSS FACTOR USED WAS CALCULATED TO COMPLY WITH AS1680.4:2001
- CLEANING OF LUMINAIRES AND ROOM SURFACES IN A NORMAL ENVIRONMENT EVERY 24 MONTHS.
 - L70 LED OUTPUT (50,000 HOURS APPROX)
 - SPOT REPLACEMENT OF FAILED LAMPS

TOTAL ILLUMINATION POWER DENSITY DOES NOT EXCEED THE MAXIMUM VALUES NOMINATED IN SECTION J6 OF THE BUILDING CODE OF AUSTRALIA.

COMPLIANCE WITH SPILL LIGHT AUSTRALIAN STANDARD AS4282 HAS NOT BEEN EVALUATED,

COMPLIANCE WITH THE EMERGENCY AND EXIT SIGN AUSTRALIAN STANDARD AS2293 HAS NOT BEEN EVALUATED.

PHOTOMETRIC DATA SUPPLIED BY MANUFACTURER. LIGHTING CALCULATION SOFTWARE USED IS AGI32.

PLEASE ENSURE LIGHTING LEVELS ARE AS EXPECTED.

Luminaire Schedule						
Symbol	Qty	Label	Arrangement	Total Lamp Lumens	LLF	Description
	22	F1	SINGLE	3954	0.650	HJR Lighting HJRPHASE-1230-38W-4000K 38w LED Troffer - Sur Mount Kit
	5	D1	SINGLE	3970	0.650	HJR Lighting HJRCOMET-1200-40W-5K 40w LED Weatherproof 5000K
	1	D2	SINGLE	1062.9	0.650	HJR Lighting HJRRARIO-F125-13W-4K 13w LED Recessed Downlight 4000K

Calculation Summary							
Label	CalcType	Units	Avg	Max	Min	Min/Avg	Min/Max
Admin_Workplane	Illuminance	Lux	196.20	292.2	146.1	0.74	0.50
Central Room	Illuminance	Lux	249.32	310.1	142.2	0.57	0.46
Childrens WC_Workplane	Illuminance	Lux	239.02	290.7	136.2	0.57	0.47
Room 1	Illuminance	Lux	214.82	287.6	93.2	0.43	0.32
Room 2	Illuminance	Lux	213.52	287.7	93.3	0.44	0.32
Staff Room_Workplane	Illuminance	Lux	148.06	185.6	124.3	0.84	0.67
Staff WC_Workplane	Illuminance	Lux	161.92	183.7	139.2	0.86	0.76
SVP_Workplane	Illuminance	Lux	143.70	143.7	143.7	1.00	1.00
Veranda	Illuminance	Lux	162.28	196.5	103.1	0.64	0.52

LPD Area Summary			
Label	Area	Total Watts	LPD
Admin_LPD	8.32	38.7	4.651
Childrens WC_LPD	8.92	77.4	8.677
Room 1 Central Room Room 2_LPD	173.69	657.9001	3.788
Staff Room_LPD	8.33	38.7	4.646
Staff WC_LPD	5.35	38.7	7.234
SVP_LPD	.89	13.9	15.618

Project: BOSSLEY PARK EARLY LEARNING CENTRE
62 - 68 BOSSLEY ROAD
BOSSLEY PARK NSW 2176

Client: HJR LIGHTING
UNIT 2 / 62 MENANGLE ST
PICTON NSW 2571



Project No. HJR/NA13	Quote No	Date 07-04-2018
-------------------------	----------	--------------------

Drawing No. 1061 05 B REFLECTED CEILING DWG	Designed By: Robert Anderson
---	---------------------------------

Revision No.	File:
--------------	-------